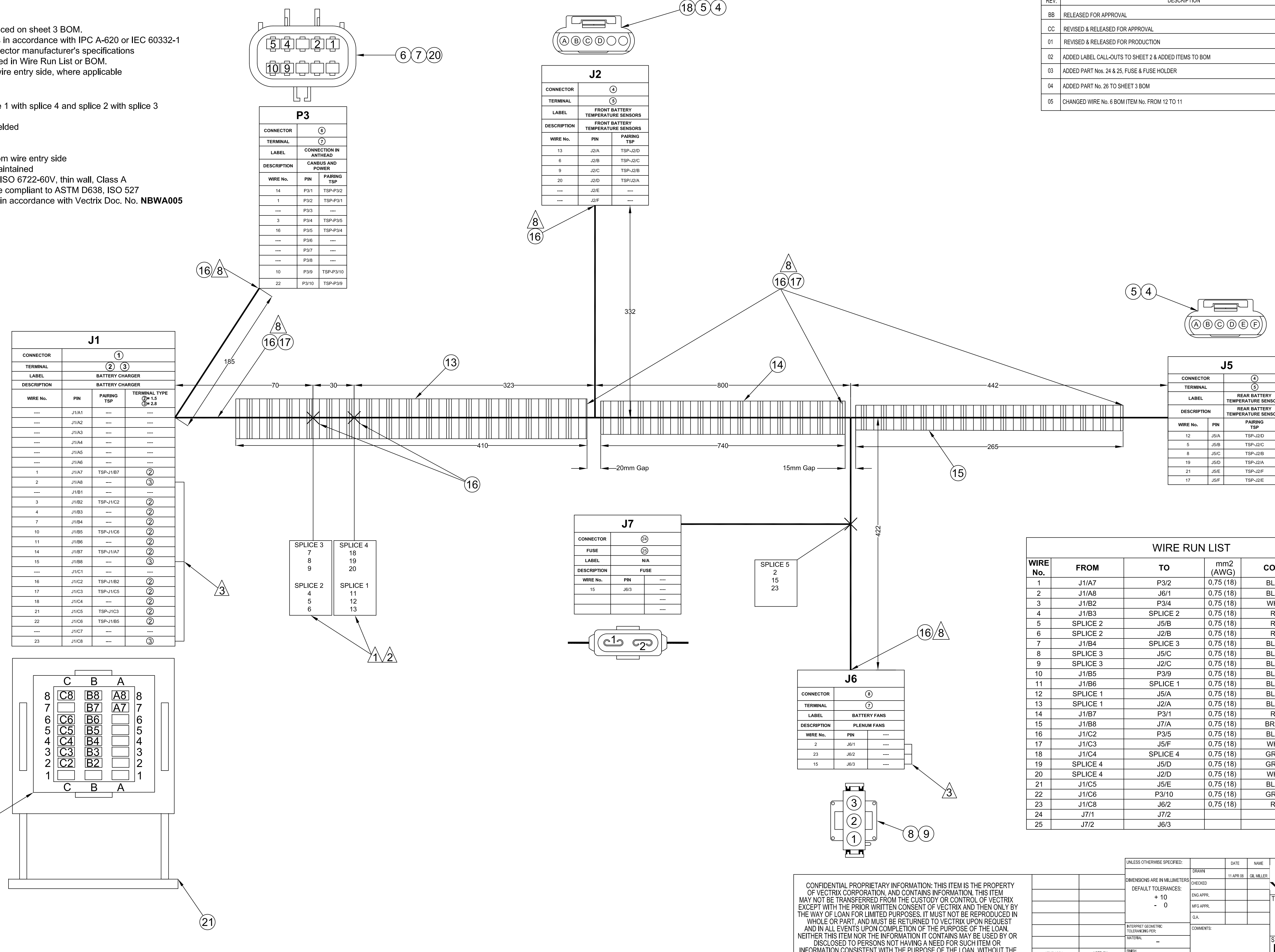


REVISIONS		DWG. No.	000209	
REV.	DESCRIPTION	DATE	ECN	NAME
BB	RELEASED FOR APPROVAL	01 MAY 08	XXX	GM
CC	REVISED & RELEASED FOR APPROVAL	13 MAY 08	XXX	GM
01	REVISED & RELEASED FOR PRODUCTION	15 MAY 08	VTRX-10424	PG
02	ADDED LABEL CALL-OUTS TO SHEET 2 & ADDED ITEMS TO BOM	20 MAY 08	VTRX-10426	PG
03	ADDED PART Nos. 24 & 25, FUSE & FUSE HOLDER	06 NOV 08	VTRX-10508	PG
04	ADDED PART No. 26 TO SHEET 3 BOM	13 JUL 10	VTRX-10583	PG
05	CHANGED WIRE No. 6 BOM ITEM No. FROM 12 TO 11	29 JUL 10	VTRX-10587	PG

- STANDARD NOTES:**
- All numbers in balloons referenced on sheet 3 BOM.
 - Follow workmanship standards in accordance with IPC A-620 or IEC 60332-1
 - Crimp in accordance with connector manufacturer's specifications
 - Color and wire gauge referenced in Wire Run List or BOM.
 - Connector views shown from wire entry side, where applicable

- SPECIAL NOTES:**
- Spliced wires are in pairs; splice 1 with splice 4 and splice 2 with splice 3
 - All splices shall be ultrasonic welded
 - Twisted Triad
 - Housing of connector shown from wire entry side
 - Continuity of shields shall be maintained
 - All cables shall be compliant to ISO 6722-60V, thin wall, Class A
 - All split thin wall conduit shall be compliant to ASTM D638, ISO 527
 - Follow workmanship standards in accordance with Vectrix Doc. No. **NBWA005**
 - TSP: Twisted Shielded Pair



P3		
CONNECTOR	④	
TERMINAL	①	
LABEL	CONNECTION IN ANTHEAD	
DESCRIPTION	CANBUS AND POWER	
WIRE No.	PIN	PAIRING TSP
14	P3/1	TSP-P3/2
1	P3/2	TSP-P3/1
---	P3/3	---
3	P3/4	TSP-P3/5
16	P3/5	TSP-P3/4
---	P3/6	---
---	P3/7	---
---	P3/8	---
10	P3/9	TSP-P3/10
22	P3/10	TSP-P3/9

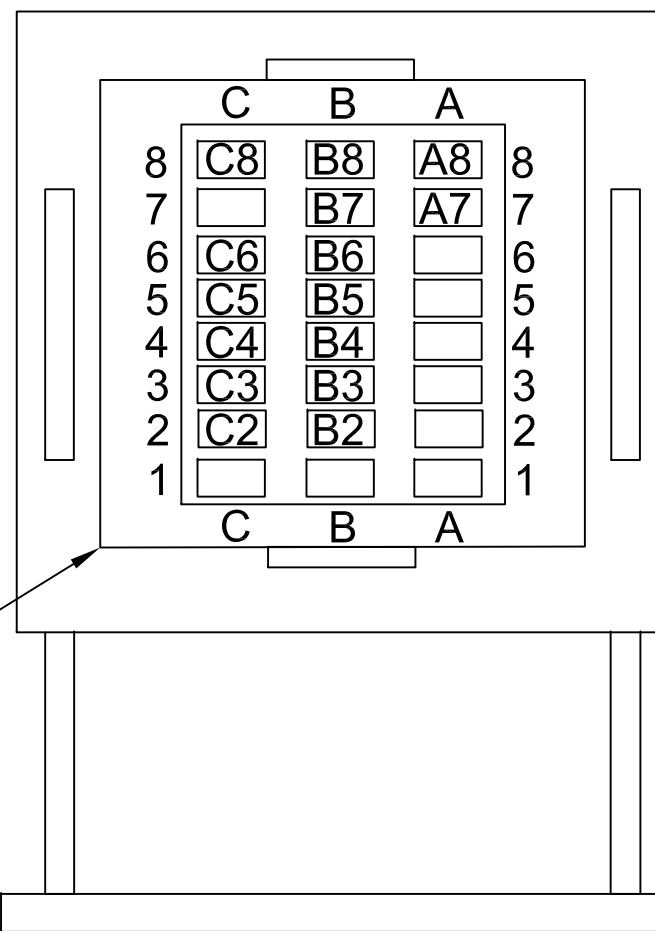
J2		
CONNECTOR	④	
TERMINAL	⑤	
LABEL	FRONT BATTERY TEMPERATURE SENSORS	
DESCRIPTION	FRONT BATTERY TEMPERATURE SENSORS	
WIRE No.	PIN	PAIRING TSP
13	J2/A	TSP-J2/D
6	J2/B	TSP-J2/C
9	J2/C	TSP-J2/B
20	J2/D	TSP-J2/A
---	J2/E	---
---	J2/F	---

J1			
CONNECTOR	①		
TERMINAL	② ③		
LABEL	BATTERY CHARGER		
DESCRIPTION	BATTERY CHARGER		
WIRE No.	PIN	PAIRING TSP	TERMINAL TYPE ② = 1.5 ③ = 2.8
---	J1/A1	---	---
---	J1/A2	---	---
---	J1/A3	---	---
---	J1/A4	---	---
---	J1/A5	---	---
---	J1/A6	---	---
1	J1/A7	TSP-J1/B7	②
2	J1/A8	---	③
---	J1/B1	---	---
3	J1/B2	TSP-J1/C2	②
4	J1/B3	---	②
7	J1/B4	---	②
10	J1/B5	TSP-J1/C8	②
11	J1/B6	---	②
14	J1/B7	TSP-J1/A7	②
15	J1/B8	---	③
---	J1/C1	---	---
16	J1/C2	TSP-J1/B2	②
17	J1/C3	TSP-J1/C5	②
18	J1/C4	---	②
21	J1/C5	TSP-J1/C3	②
22	J1/C6	TSP-J1/B5	②
---	J1/C7	---	---
23	J1/C8	---	③

SPlice 3		SPlice 4	
7	18	18	19
8	19	19	20
9	20	20	21

SPlice 2		SPlice 1	
4	11	11	12
5	12	12	13
6	13	13	14

WIRE RUN LIST					
WIRE No.	FROM	TO	mm2 (AWG)	COLOR	BOM ITEM No.
1	J1/A7	P3/2	0.75 (18)	BLACK	⑫
2	J1/A8	J6/1	0.75 (18)	BLACK	⑩
3	J1/B2	P3/4	0.75 (18)	WHITE	⑫
4	J1/B3	SPlice 2	0.75 (18)	RED	⑫
5	SPlice 2	J5/B	0.75 (18)	RED	⑫
6	SPlice 2	J2/B	0.75 (18)	RED	⑪
7	J1/B4	SPlice 3	0.75 (18)	BLACK	⑫
8	SPlice 3	J5/C	0.75 (18)	BLACK	⑫
9	SPlice 3	J2/C	0.75 (18)	BLACK	⑪
10	J1/B5	P3/9	0.75 (18)	BLACK	⑫
11	J1/B6	SPlice 1	0.75 (18)	BLACK	⑫
12	SPlice 1	J5/A	0.75 (18)	BLACK	⑫
13	SPlice 1	J2/A	0.75 (18)	BLACK	⑪
14	J1/B7	P3/1	0.75 (18)	RED	⑫
15	J1/B8	J7/A	0.75 (18)	BROWN	⑩
16	J1/C2	P3/5	0.75 (18)	BLACK	⑫
17	J1/C3	J5/F	0.75 (18)	WHITE	⑫
18	J1/C4	SPlice 4	0.75 (18)	GREEN	⑫
19	SPlice 4	J5/D	0.75 (18)	GREEN	⑫
20	SPlice 4	J2/D	0.75 (18)	WHITE	⑪
21	J1/C5	J5/E	0.75 (18)	BLACK	⑫
22	J1/C6	P3/10	0.75 (18)	GREEN	⑫
23	J1/C8	J6/2	0.75 (18)	RED	⑩
24	J7/1	J7/2	0.75 (18)	---	---
25	J7/2	J6/3	0.75 (18)	---	---



CONFIDENTIAL PROPRIETARY INFORMATION: THIS ITEM IS THE PROPERTY OF VECTRIX CORPORATION, AND CONTAINS INFORMATION. THIS ITEM MAY NOT BE TRANSFERRED FROM THE CUSTODY OR CONTROL OF VECTRIX EXCEPT WITH THE PRIOR WRITTEN CONSENT OF VECTRIX AND THEN ONLY BY THE WAY OF LOAN FOR LIMITED PURPOSES. IT MUST NOT BE REPRODUCED IN WHOLE OR PART, AND MUST BE RETURNED TO VECTRIX UPON REQUEST AND IN ALL EVENTS UPON COMPLETION OF THE PURPOSE OF THE LOAN. NEITHER THIS ITEM NOR THE INFORMATION IT CONTAINS MAY BE USED BY OR DISCLOSED TO PERSONS NOT HAVING A NEED FOR SUCH ITEM OR INFORMATION CONSISTENT WITH THE PURPOSE OF THE LOAN, WITHOUT THE PRIOR WRITTEN CONSENT OF VECTRIX CORPORATION.

UNLESS OTHERWISE SPECIFIED:	DATE	NAME	
DRAWN	11 APR 08	GL MILLER	
CHECKED			
ENG APPR.			
MFG APPR.			
QA			
INTERPRET GEOMETRIC TOLERANCING PER:	COMMENTS:		
DRAWING	---		
FINISH	---		
APPLICATION	DO NOT SCALE DRAWING		

SIZE	DWG. No.	REV
D	000209	05
SCALE: 1:1	WEIGHT:	SHEET: 1 OF 3

55 SAMUEL BARNET BLVD
NEW BEDFORD, MA 02745
(508)992-5300

VECTRIX
ELECTRIC SCOOTERS

TITLE:
CABLE ASSY - CHARGER SIGNAL HARNESS
WIRE HARNESS ASSEMBLY
VECTRIX ELECTRIC SCOOTER