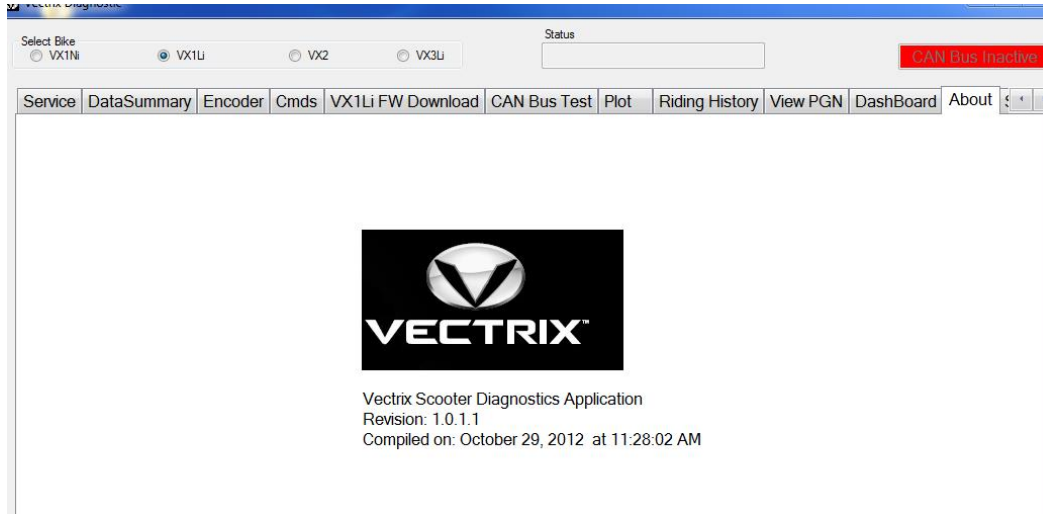


## VX-1 Li / Li+ proceeding

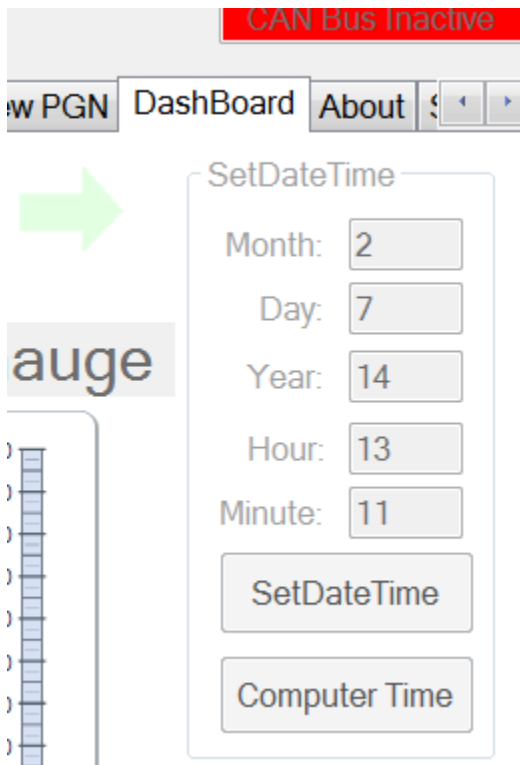
1. Make sure you have the latest diagnostic installed – Rev 1.0.1.1 from October 2012



2. Upgrade software to the newest

- a. BC - EVPS 8010-8 NEQL
- b. MC - MCR2042-4
- c. ICM - ICM DIY\_1708
- d. BMS - GPLiBMS R54

3. Send the date and time to the MC



4. Setup the correct battery capacity – if you are not sure, open the battery box and check height of the cells. 30Ah cells fill up around  $\frac{3}{4}$  of the box, 42Ah cells fill up almost fully the box.

The screenshot shows a software interface for a battery management system. At the top, there are tabs: Service, DataSummary, Encoder, Cmds, VX1Li FW Download, and CAN Bu. The 'DataSummary' tab is active.

**Total Voltages**

- Sum Cell Volts: xxx
- MC Volts:
- Battery Current:
- Charger Volts:
- Charge Amps:

**Charger Modes**

- ☐ Constant Current
- ☐ Constant Voltage
- ☐ Equalization

**Cell Temperatures (Deg C)**

	Bd 0	Bd 1	Bd 2	Bd 3
High	<span style="background-color: red; color: black;">xxx</span>	<span style="background-color: red; color: black;">xxx</span>	<span style="background-color: red; color: black;">xxx</span>	<span style="background-color: red; color: black;">xxx</span>
Low	<span style="background-color: red; color: black;">xxx</span>	<span style="background-color: red; color: black;">xxx</span>	<span style="background-color: red; color: black;">xxx</span>	<span style="background-color: red; color: black;">xxx</span>
Amb	<span style="background-color: red; color: black;">xxx</span>	<span style="background-color: red; color: black;">xxx</span>	<span style="background-color: red; color: black;">xxx</span>	<span style="background-color: red; color: black;">xxx</span>

**Thermal Switch**

Ok Ok Ok Ok

**Charger Amp Hour Configuration**

☐ Battery 42 Ah ☐ Battery 30 Ah

5. Charge scooter to full – EC49. It can take very long. If after few days is still not completed consider charging the weakest cells by external charger.
6. Perform the test ride – with a normal, not very aggressive ride discharge battery completely (till the bars of battery level disappear and red light of battery flash)
7. Fully charge battery
8. Download the riding history, check the Charge Amphrs
9. Adjust the battery capacity stored in charger to the real one +2Ah (for example if the real one is 36Ah – set up 38Ah) – see below instruction of adjusting the charger.

**SW rev MC2042-4 \ BC8010-8 \ BMSR54**  
**Charger Features Setting Menu**



*With KILL switch Enable press and hold for 3sec the dash "S" button for enter in CHARGER SETTING MENU*

*Page can be changed by left brake lever impulse, save the data and exit menu by 3sec holding "S" button*

**Page 1) Charge Delay Timer:**

*⇒ Charge delay timer value is show at clock field, time can be increased or decrease by step of 15 min rotating the throttle*

**Page 2) Battery Capacity:**

*⇒ Battery Capacity value is show at clock field, battery capacity can be adjust by step of 1A rotating the throttle*

**Page 3) Charger Power Output:**

*⇒ Charger Power value is show at clock field, Charge Power can be adjust by step of 50Watt rotating the throttle*

